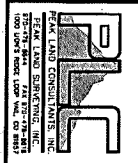
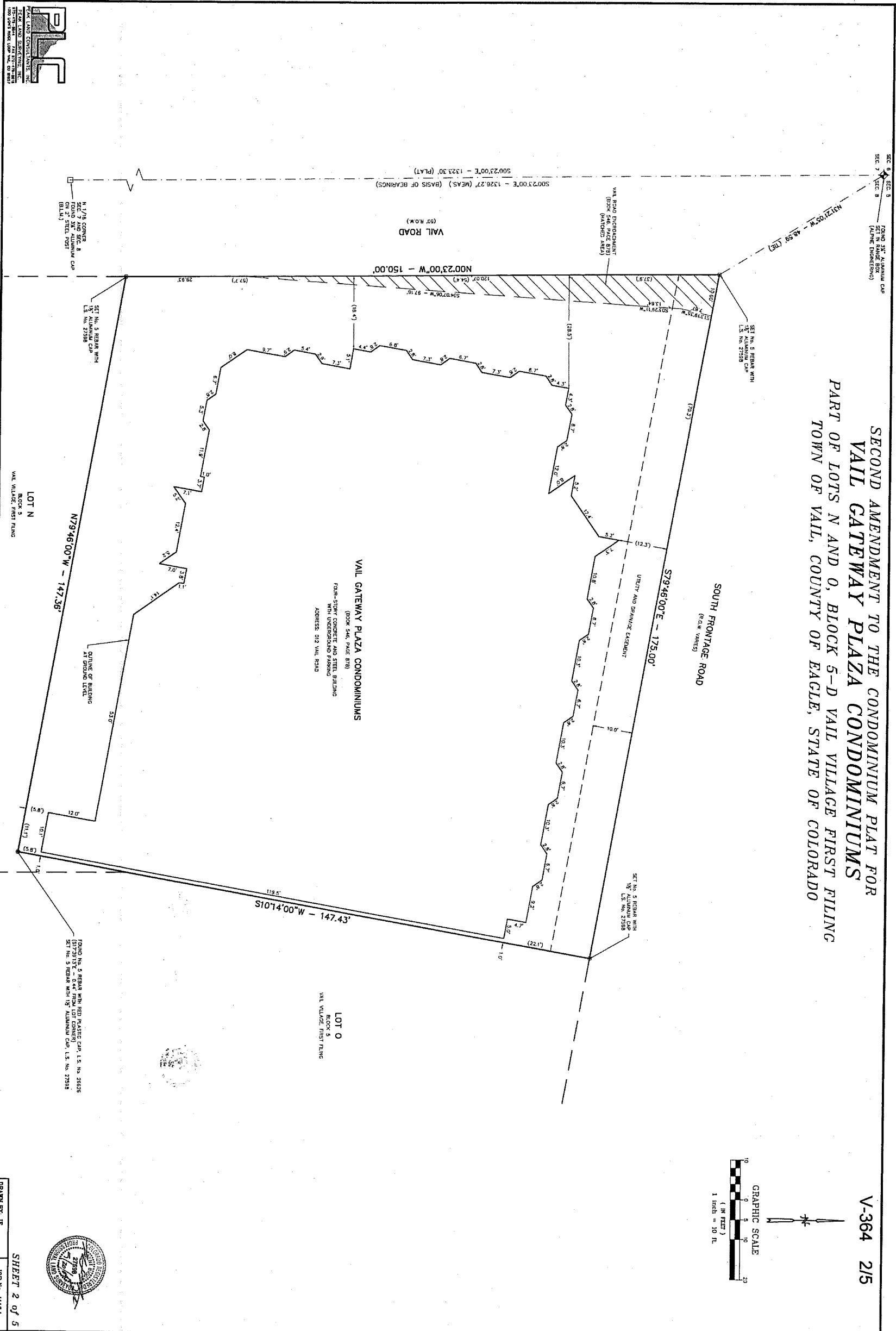
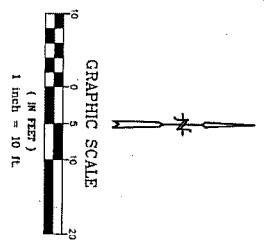




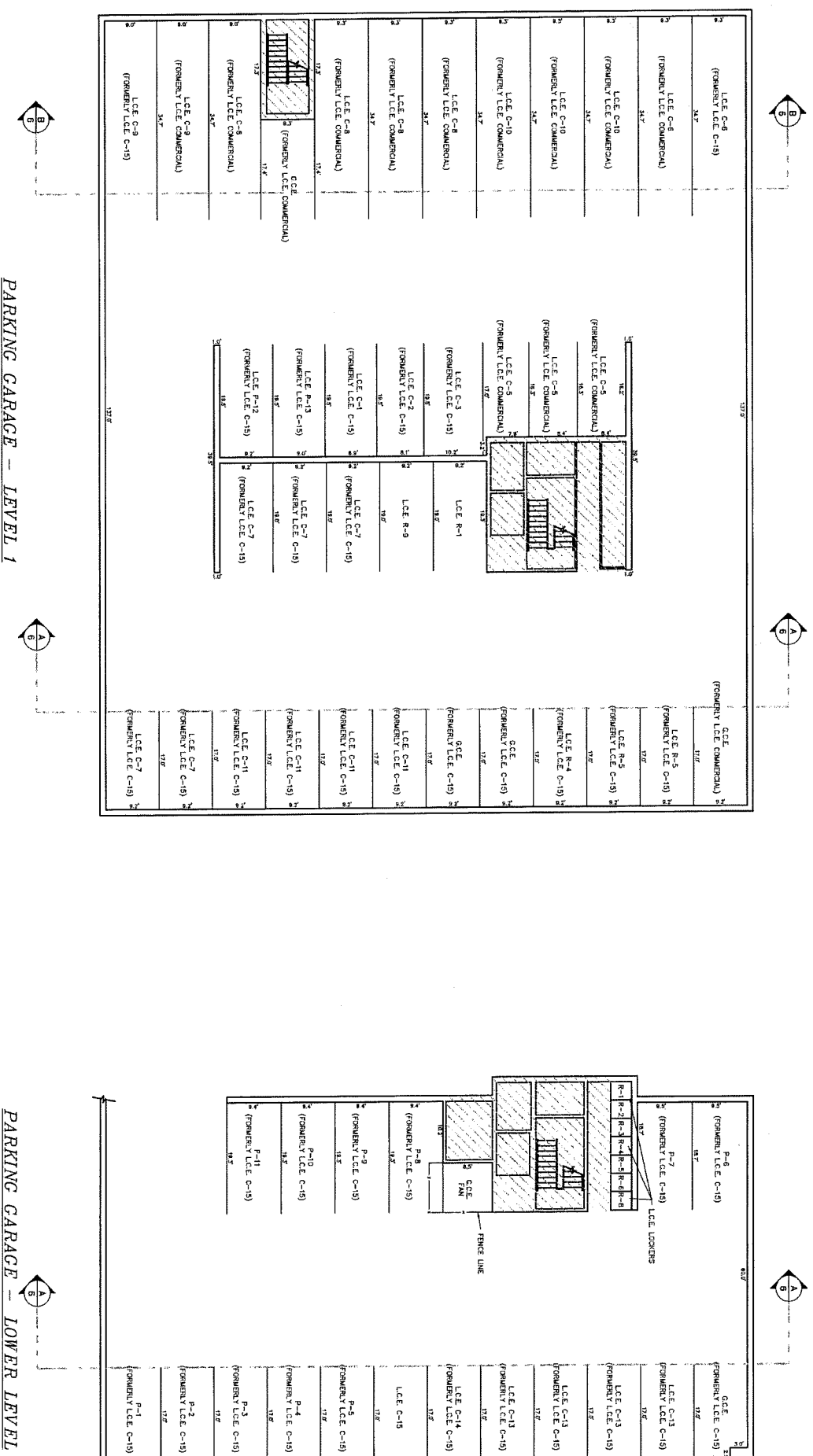
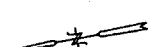
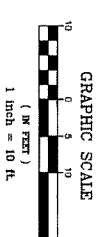
**SECOND AMENDMENT TO THE CONDOMINIUM PLAT FOR  
VAIL GATEWAY PLAZA CONDOMINIUMS  
PART OF LOTS N AND O, BLOCK 5-D VAIL VILLAGE FIRST FILING  
TOWN OF VAIL, COUNTY OF EAGLE, STATE OF COLORADO**

V-364 2/5



DRAWN BY JF SHEET 2 of 5 JOB NO. 11181

SECOND AMENDMENT TO THE CONDOMINIUM PLAT FOR  
**VAIL GATEWAY PLAZA CONDOMINIUMS**  
 PART OF LOTS N AND O, BLOCK 5-D VAIL VILLAGE FIRST FILING  
 TOWN OF VAIL, COUNTY OF EAGLE, STATE OF COLORADO



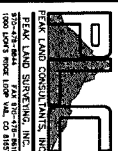
PARKING GARAGE - LEVEL 1

PARKING GARAGE - LOWER LEVEL

**LEGEND**

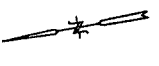
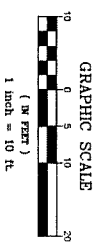
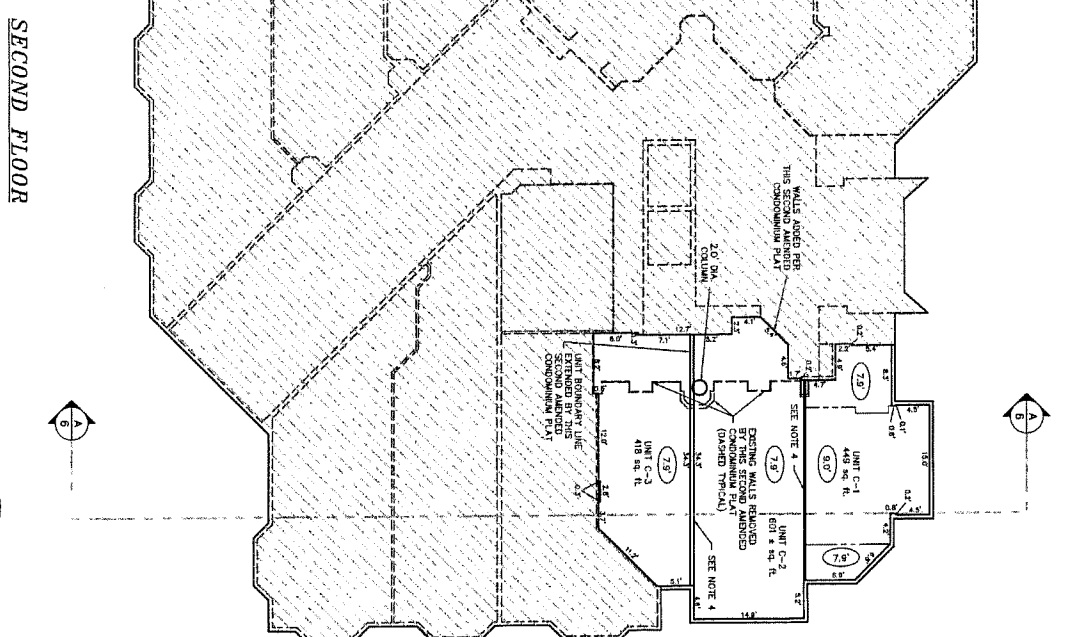
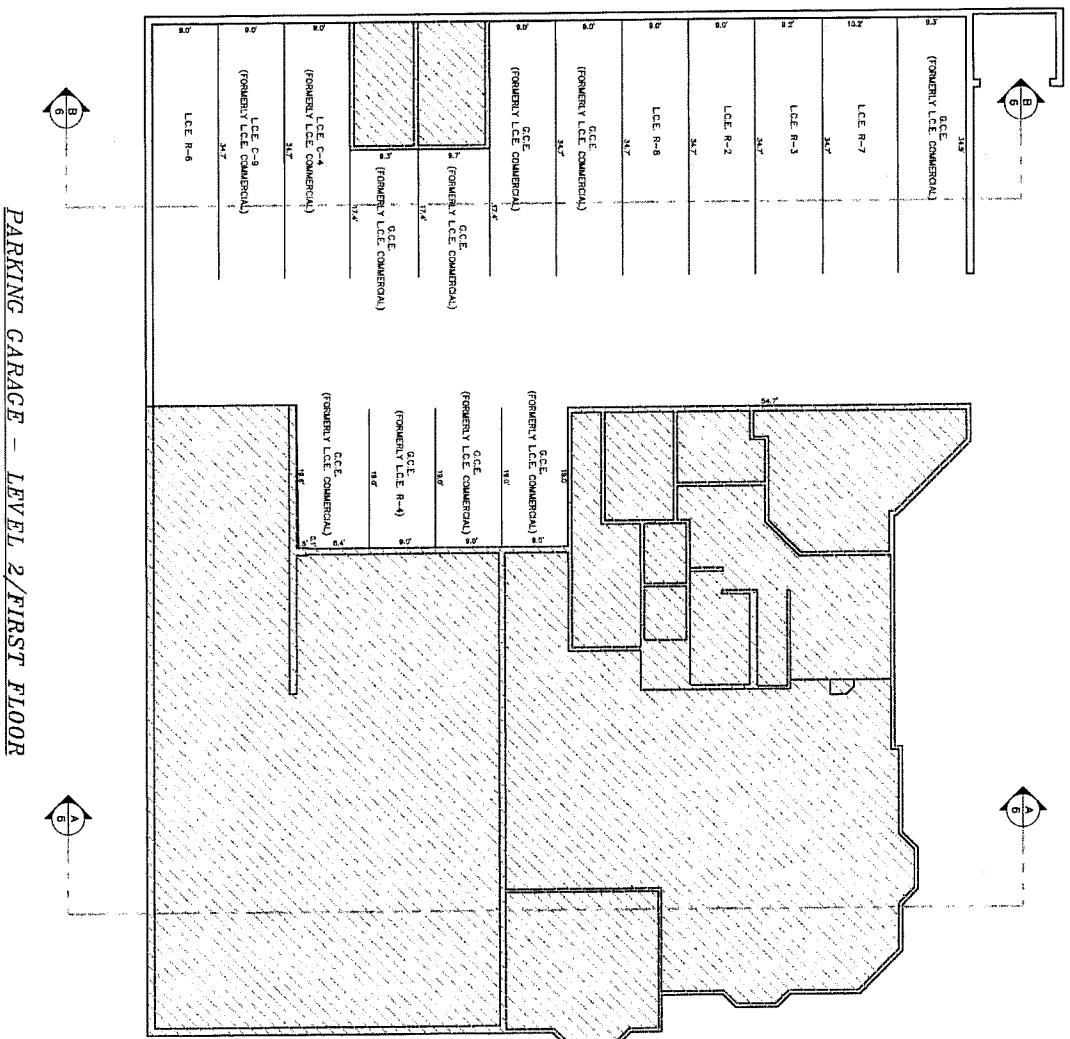
|  |                        |
|--|------------------------|
|  | GENERAL COMMON ELEMENT |
|  | LIMITED COMMON ELEMENT |

NOTE:  
 HATCHED AREA IS NOT A PART OF THIS SECOND AMENDED CONDOMINIUM PLAT. REFER TO THE CONDOMINIUM MAP FOR VAIL GATEWAY PLAZA CONDOMINIUMS RECORDED JANUARY 31, 1991 IN BOOK 546 AT PAGE 878.

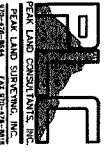


SECOND AMENDMENT TO THE CONDOMINIUM PLAT FOR  
**VAIL GATEWAY PLAZA CONDOMINIUMS**  
 PART OF LOTS N AND O, BLOCK 5-D VAIL VILLAGE FIRST FILING  
 TOWN OF VAIL, COUNTY OF EAGLE, STATE OF COLORADO

V-364 4/5



SHEET 4 of 5 NOTES  
 1. ALL DIMENSIONS SHOWN ARE TO INSIDE OF FINISHED WALLS.

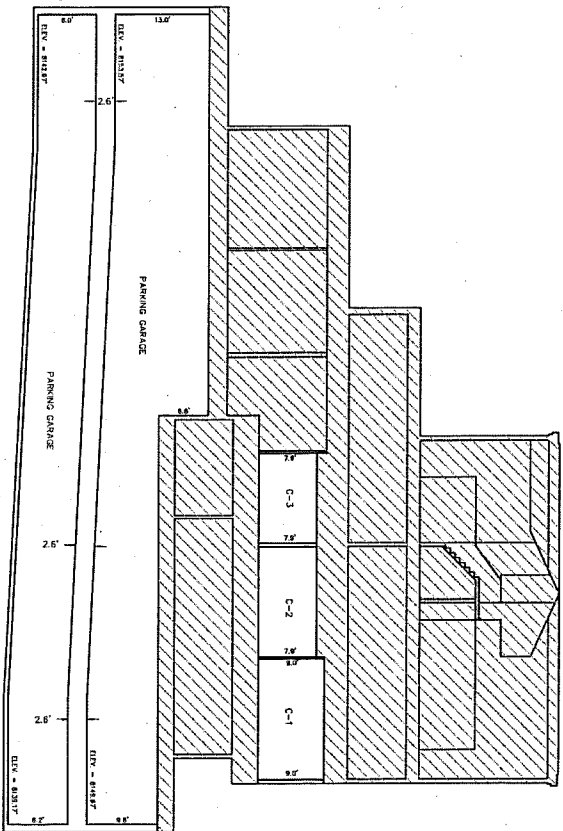
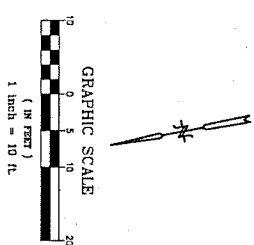


NOTE  
 HATCHED AREA IS NOT A PART OF THIS SECOND AMENDED CONDOMINIUM PLAT. REFER TO THE CONDOMINIUM MAP FOR VAIL GATEWAY PLAZA CONDOMINIUMS RECORDED JANUARY 31, 1991 IN BOOK 546 AT PAGE 878

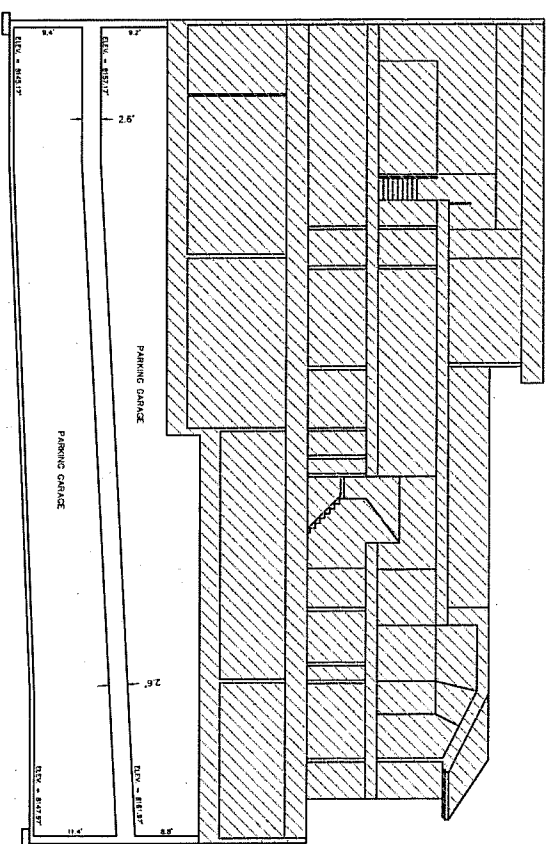
SHEET 4 of 5  
 DRAWN BY: JF JOB No. 11181

SECOND AMENDMENT TO THE CONDOMINIUM PLAT FOR  
**VAIL GATEWAY PLAZA CONDOMINIUMS**  
 PART OF LOTS N AND O, BLOCK 5-D VAIL VILLAGE FIRST FILING  
 TOWN OF VAIL, COUNTY OF EAGLE, STATE OF COLORADO

V-364 5/5



SECTION A-A

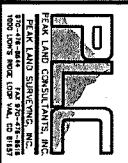


SECTION B-B

**LEGEND**

|        |                        |
|--------|------------------------|
| C.C.E. | GENERAL COMMON ELEMENT |
| L.C.E. | LIMITED COMMON ELEMENT |

NOTE:  
 HATCHED AREA IS NOT A PART OF THIS MAP. REFER TO THE CONDOMINIUM MAP FOR VAIL GATEWAY PLAZA CONDOMINIUMS RECORDED JANUARY 31, 1991 IN BOOK 546 AT PAGE 878.



PEAK LAND CONSULTANTS, INC.  
 PEAK LAND SURVEYING, INC.  
 1000 LONE TREE CIRCLE, SUITE 100  
 BOULDER, COLORADO 80501



DRAWN BY: JF  
 SHEET 5 of 5  
 JOB No. 11161